

Overview

F5-4513 is the most newly promoted product that can convert 1-4E1 to 10Base-T Ethernet, and vice versa. This protocol converter could support 1-4E1 to Ethernet, which extend the bandwidth to 7.68Mbps. It is widely used in two LAN connecting, remotemonitor and video broadcasting.



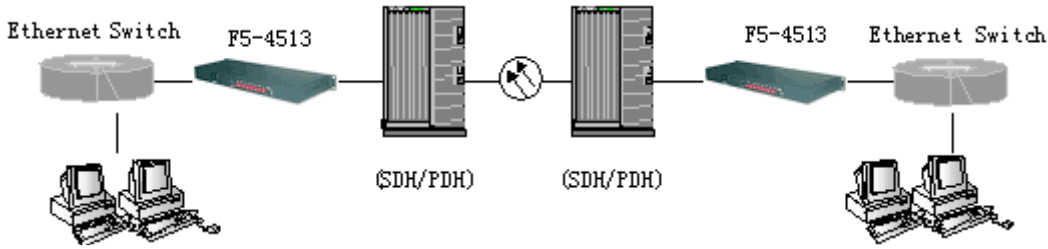
Features

- Fully compatible with IEEE802.3, ITU-T G703, G704 and G823
- Support 10Base-T, 100Base-TX protocol
- Support VLAN & IEEE802.1q packets
- Enable any group of CH1-CH4 E1 channel to transmit the data at will
- Extend the bandwidth to 7.68Mbps when using 4E1 channels
- Support auto-inspection of effective E1 channel without interruption of data transfer.
- Automatically cut off the E1Channel when it has LOS and AIS alarm, and inform the remote end simultaneously
- Support remote E1 Loop function
- 75/120 ohm Optional of E1 channel impedance
- Internal power supply, overall power consumption<3w, AC160V-260V or DC -48V optional

Specification

- E1 Port
 - Bit rate: 2.048Mb
 - Line code: HDB3
 - Standard: in accordance with ITU-T G.703, G.704
 - Connector: BNC connector, line impedance 75ohm
 - Number of E1: 4
 - Jitter Performance: compatible with G.742 and G.82
- Ethernet Port
 - Data Rate: 10/100Mbps
 - Standard: Compatible with IEEE802.3
 - Connector: RJ45
 - Number of Ports:1 port
 - Auto-negotiation with half/full duplex
- Dimension: 440mm(W) *160mm(D)*44mm(H)

Application



Address : Perpa Ticaret Merkezi, A Blok No.516 Şişli/İstanbul | Tel : +90 212 3204030 | Fax : +90212 3200255 | e-mail : info@telkolink.com

www.telkolink.com

© 2009 telcolink Inc. All rights reserved. Information in this document is subject to change without notice. All company names, logos, and product designs that are trademarks or registered trademarks are the property of their respective owners. 617-000175 Rev. C

Haberleşme sistemlerinde **yüksek performansı** yakalayın

