



Non-Managed Twin-rate Ethernet Fiber converter

CL-MCSFP-100/1000

The CL-MCSFP-100/1000 is a copper to fiber Gigabit Ethernet solution designed to make conversion between 10/100/1000Base-T to 100Base-FX and 10/100/1000Base-T to 1000Base-SX/LX.. The CL-MCSFP-100/1000 provides the fiber multi-rate 100Mbps/1000Mbps Ethernet with SC connector. This non-managed converter has a simple DIP switch for setting auto or forced mode for both UTP and fiber port and for enabling or disabling its LFP (Link Fault Pass-thru) feature by setting fiber port to 1000Base-FX forced mode.

Features

- 10/100/1000Base-T to 1000Base-X
- 10/100/1000Base-T to 100Base-FX
- Auto-negotiation or forced mode in both copper and fiber
- Auto MDI/MDIX
- Forward 1632 bytes (Max.) packets
- Supports Flow control (Pause)

Optical Interface

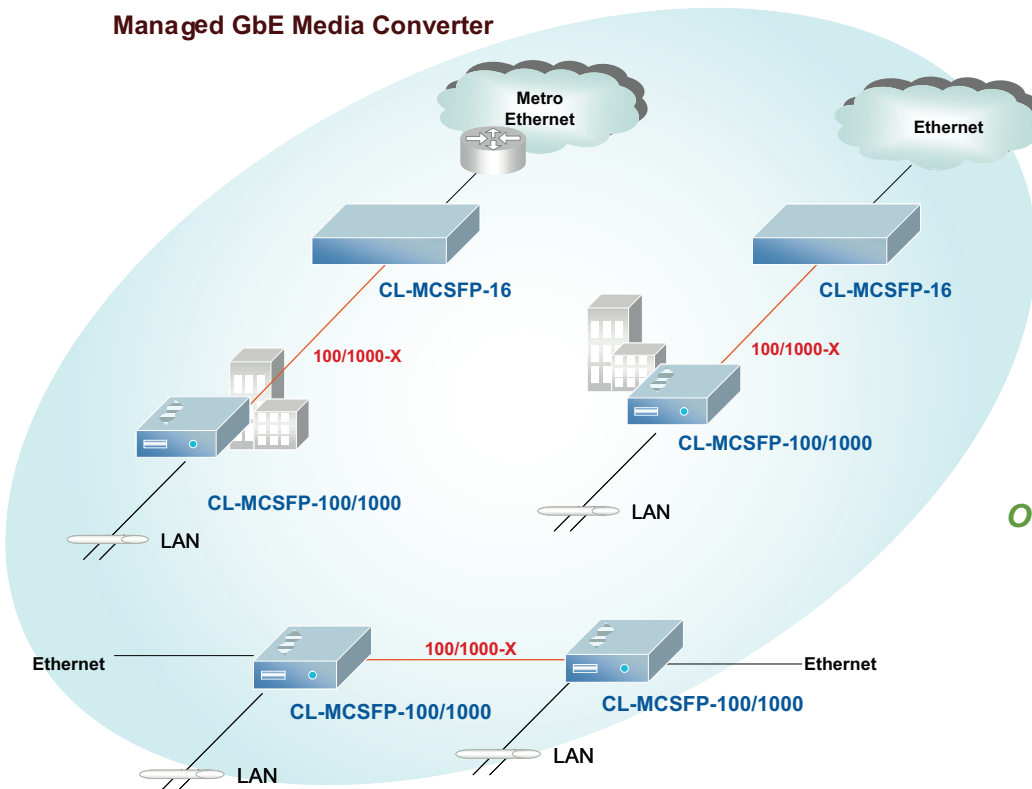
| | |
|-------------|--|
| Connector | SFP Slot |
| Data rate | 100Mbps, 1000Mbps |
| Duplex mode | Full duplex |
| Fiber | MM 50/125µm, 62.5/125µm. SM 9/125µm |
| Distance | SFP spec. |
| Wavelength | MM 850nm, SM 1310,1550nm WDM 1310Tx/1550Rx (type A) 1550Tx/1310Rx (type B) |

Electrical Interface

| | |
|-------------|---|
| Connector | RJ45 |
| Data rate | 10Mbps, 100Mbps, 1000Mbps |
| Duplex mode | Half / Full duplex |
| Cable | 10Base-T Cat.3, 4, 5, UTP 100Base-TX Cat.5, 5e or higher 1000Base-T Cat.5, 5e or higher |

| | |
|-------------------|---|
| Standard | IEEE 802.3, IEEE 802.3u, IEEE802.3ab, IEEE802.3z |
| Indications | LED (Power, FX-Link, TX-Link, TX-SPD, TX-Duplex, LFP) |
| Power Input | 12VDC |
| Power Consumption | < 5W |
| Dimension | 108 x 74 x 23mm (D x W x H) |
| Weight | 120g |
| Temperature | 0 ~ 50°C (Operating), 0 ~ 70°C (Storage) |
| Humidity | 10 ~ 90% non-condensing |
| Certification | CE, FCC, LVD, RoHS |
| MTBF | 65,000 hrs (25°C) |

Managed GbE Media Converter



Ordering Information

- CL-MCSFP-100/1000**
- CL-MCSFP-16**
- CL-MCSFP-16M**