

CLE-BOX

Fiber Optic Cleaner Box

CLE-BOX is essential accessory to maintain and guarantee good quality of fiber optic connection. It is the best non-alcohol cleaning method for various fiber optic terminations which is simply and swiftly used. Box tape replacement is offered to make sure low cleaning cost .Suitable for connector such as SC 、FC、 MU、 LC、 ST、 D4 、 DIN、 E2000 etc.



Features

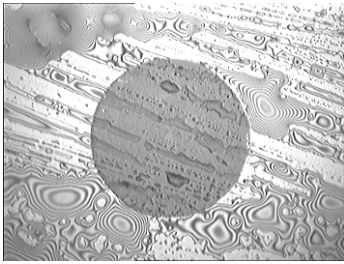
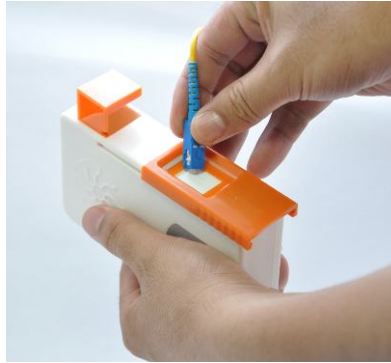
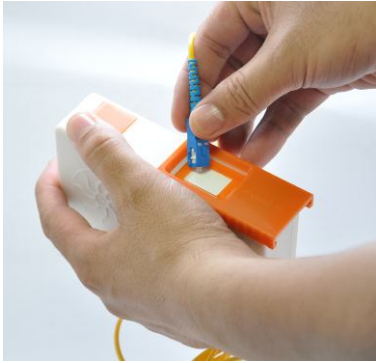
- ◆ Special non-alcohol superfine fiber .
- ◆ Well handled and antistatic.
- ◆ Friendly using ,efficient cleaning.
- ◆ Easy to replace the tape, no pollutions.
- ◆ Cleaning time 500+.
- ◆ Level of cleaning is 100.

Specifications

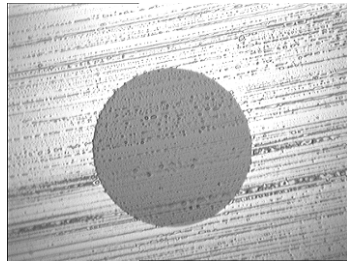
- ◆ Applications:
SC,FC,ST,MU,LC,MPO,MTRJ (w/o pins)
- ◆ Dimensions: 115mm×79mm×32mm
- ◆ Cleaning times: 500+ per box.



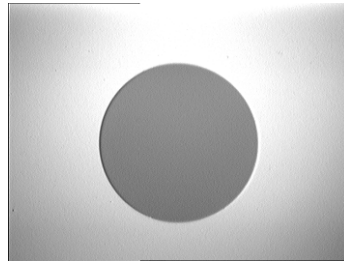
Operation & Tape Replacement



Before1



Before2



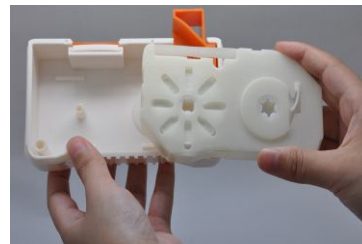
After



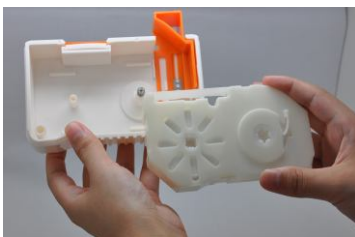
1. Take off sliding cover



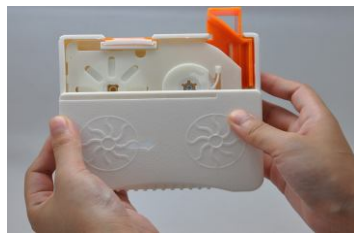
2. Take off side cover



3. Take away old tape



4. Put on new tape



5. Put on side cover



6. Put on sliding cover