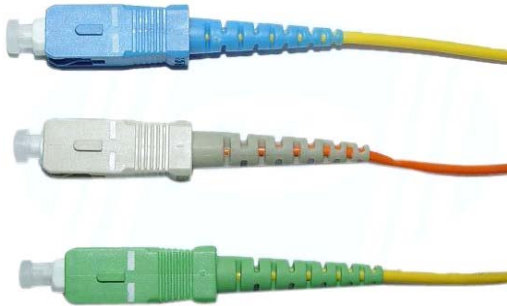


**SC Patch**

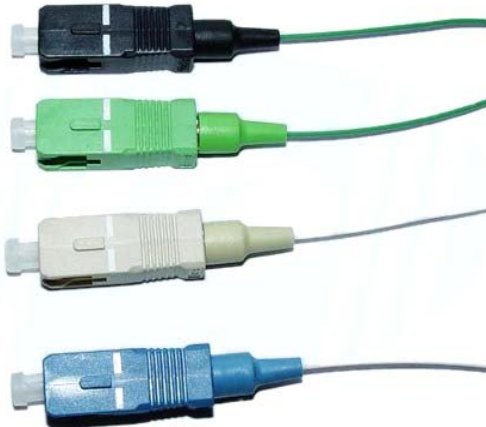


**Use** : Applications: Fiber Optic Telecommunication System,  
Fiber Optic Access Network, LAN, Fiber Optic Transducer, Fiber Optic Data Transmission, CATV, Test Equipment

**Feature** : Features: Multi-polishing Ways, such as PC, UPC;

Low Insertion Loss, High Return Loss, High Temperature Stability, Good Repeatability, Good Exchangeability, Plug and Unplug Link Together, Easy and Convenient.

**Type** : SC patchcord



♠ Adaptor Technical Standard

Type	Singlemode(UPC)	Singlemode(APC)	Multimode(PC)
Insertion Loss	≤0.3dB	≤0.3dB	≤0.3dB
Return Loss	≥50 dB (UPC)	≥60 dB (APC)	≥20 dB
Operating Temperature	-40 °C ~ 80 °C		
Vibration	?≤0.1 dB change between 10Hz to 55Hz.		
Available Wavelengths	MM=850nm , SM=1550nm		

**FC Patch**

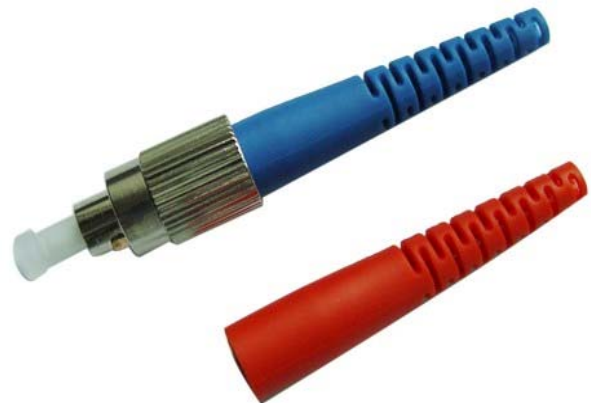


**Use** : Applications: Fiber Optic Telecommunication System, Fiber Optic Access Network, LAN, Fiber Optic Transducer, Fiber Optic Data Transmission, CATV, Test Equipment

**Feature** : Features: Multi-polishing Ways, such as PC, UPC;

Low Insertion Loss, High Return Loss, High Temperature Stability, Good Repeatability, Good Exchangeability, Plug and Unplug Link Together, Easy and Convenient.

**Type** : FC patchcord



♠ Adaptor Technical Standard

Type	Singlemode(UPC)	Singlemode(APC)	Multimode(PC)
Insertion Loss	≤0.3dB	≤0.3dB	≤0.3dB
Return Loss	≥50 dB (UPC)	≥60 dB (APC)	≥20 dB
Operating Temperature	-40℃ ~ 80℃		
Vibration	?≤0.1 dB change between 10Hz to 55Hz.		
Available Wavelengths	MM=850nm , SM=1550nm		

**ST Patch**



**Use** : Applications: Fiber Optic Telecommunication System, Fiber Optic Access Network, LAN, Fiber Optic Transducer, Fiber Optic Data Transmission, CATV, Test Equipment

**Feature** : Features: Multi-polishing Ways, such as PC, UPC; Low Insertion Loss, High Return Loss, High Temperature Stability, Good Repeatability, Good Exchangeability, Plug and Unplug Link Together, Easy and Convenient.

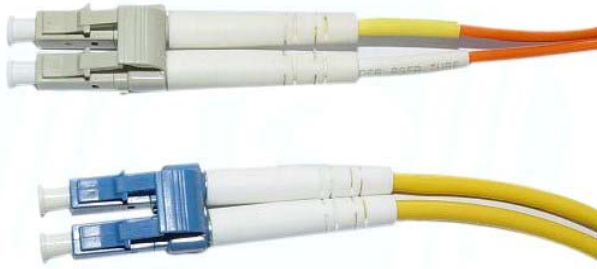
**Type** : ST patchcord



♠ Adaptor Technical Standard

Type	Singlemode(UPC)	Singlemode(APC)	Multimode(PC)
Insertion Loss	≤0.3dB	≤0.3dB	≤0.3dB
Return Loss	≥50 dB (UPC)	≥60 dB (APC)	≥20 dB
Operating Temperature	-40℃ ~ 80℃		
Vibration	?≤0.1 dB change between 10Hz to 55Hz.		
Available Wavelengths	MM=850nm , SM=1550nm		

**LC Patch**

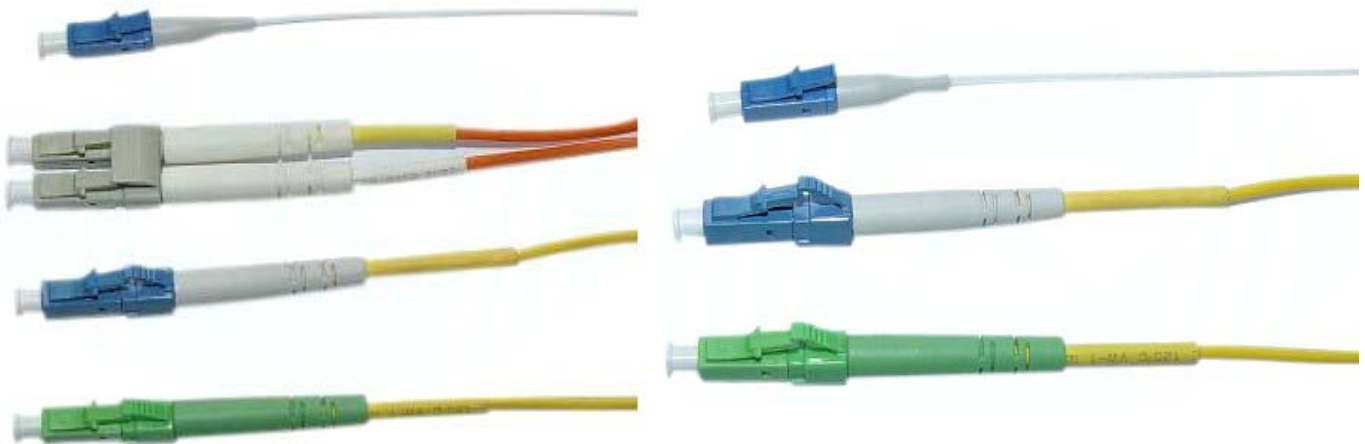


**Use** : Applications: Fiber Optic Telecommunication System, Fiber Optic Access Network, LAN, Fiber Optic Transducer, Fiber Optic Data Transmission, CATV, Test Equipment

**Feature** : Features: Multi-polishing Ways, such as PC, UPC;

Low Insertion Loss, High Return Loss, High Temperature Stability, Good Repeatability, Good Exchangeability, Plug and Unplug Link Together, Easy and Convenient.

**Type** : LC patchcord



♠ Adaptor Technical Standard

Type	Singlemode(UPC)	Singlemode(APC)	Multimode(PC)
Insertion Loss	≤0.3dB	≤0.3dB	≤0.3dB
Return Loss	≥50 dB (UPC)	≥60 dB (APC)	≥20 dB
Operating Temperature	-40 °C ~ 80 °C		
Vibration	?≤0.1 dB change between 10Hz to 55Hz.		
Available Wavelengths	MM=850nm , SM=1550nm		

**MU Patch**



**Use** : Applications: Fiber Optic Telecommunication System,  
Fiber Optic Access Network, LAN, Fiber Optic Transducer, Fiber Optic Data Transmission, CATV, Test Equipment

**Feature** : Features: Multi-polishing Ways, such as PC, UPC;  
Low Insertion Loss, High Return Loss, High Temperature Stability, Good Repeatability, Good Exchangeability, Plug and Unplug Link Together, Easy and Convenient.

**Type** : MU patchcord



♠ Adaptor Technical Standard

Type	Singlemode(UPC)	Singlemode(APC)	Multimode(PC)
Insertion Loss	≤0.3dB	≤0.3dB	≤0.3dB
Return Loss	≥50 dB (UPC)	≥60 dB (APC)	≥20 dB
Operating Temperature	-40℃ ~ 80℃		
Vibration	?≤0.1 dB change between 10Hz to 55Hz.		
Available Wavelengths	MM=850nm , SM=1550nm		

**E2000 Patch**

**Use** : Applications: Fiber Optic Telecommunication System, Fiber Optic Access Network, LAN, Fiber Optic Transducer, Fiber Optic Data Transmission, CATV, Test Equipment

**Feature** : Features: Multi-polishing Ways, such as PC, UPC;

Low Insertion Loss, High Return Loss, High Temperature Stability, Good Repeatability, Good Exchangeability, Plug and Unplug Link Together, Easy and Convenient.

**Type** : E2000 patchcord



♠ Adaptor Technical Standard

Type	Singlemode(UPC)	Singlemode(APC)	Multimode(PC)
Insertion Loss	≤0.3dB	≤0.3dB	≤0.3dB
Return Loss	≥50 dB (UPC)	≥60 dB (APC)	≥20 dB
Operating Temperature	-40℃ ~ 80℃		
Vibration	?≤0.1 dB change between 10Hz to 55Hz.		
Available Wavelengths	MM=850nm , SM=1550nm		



**MTRJ Patch**



**Use** : Applications: Fiber Optic Telecommunication System,  
Fiber Optic Access Network, LAN, Fiber Optic Transducer, Fiber Optic Data Transmission, CATV, Test Equipment

**Feature** : Features: Multi-polishing Ways, such as PC, UPC;  
Low Insertion Loss, High Return Loss, High Temperature Stability, Good Repeatability, Good Exchangeability, Plug and Unplug Link Together, Easy and Convenient.

**Type** : MTRJ patchcord



♠ Adaptor Technical Standard

Type	Singlemode(UPC)	Singlemode(APC)	Multimode(PC)
Insertion Loss	≤0.3dB	-	≤0.3dB
Return Loss	≥50 dB (UPC)	-	≥20 dB
Operating Temperature	-40 °C ~ 80 °C		
Vibration	?≤0.1 dB change between 10Hz to 55Hz.		
Available Wavelengths	MM=850nm , SM=1550nm		

**Escon Patch**



**Use** : Applications: Fiber Optic Telecommunication System,  
Fiber Optic Access Network, LAN, Fiber Optic Transducer, Fiber Optic Data Transmission, CATV, Test Equipment

**Feature** : Features: Multi-polishing Ways, such as PC, UPC;  
Low Insertion Loss, High Return Loss, High Temperature Stability, Good Repeatability, Good Exchangeability, Plug and Unplug Link Together, Easy and Convenient.

**Type** : Escon patchcord



♠ Adaptor Technical Standard

Type	Singlemode(UPC)	Singlemode(APC)	Multimode(PC)
Insertion Loss	≤0.3dB	-	≤0.3dB
Return Loss	≥50 dB (UPC)	-	≥20 dB
Operating Temperature	-40℃ ~ 80℃		
Vibration	?≤0.1 dB change between 10Hz to 55Hz.		
Available Wavelengths	MM=850nm , SM=1550nm		



**FDDI Patch**



**Use** : Applications: Fiber Optic Telecommunication System,  
Fiber Optic Access Network, LAN, Fiber Optic Transducer, Fiber Optic Data Transmission, CATV, Test Equipment

**Feature** : Features: Multi-polishing Ways, such as PC, UPC;  
Low Insertion Loss, High Return Loss, High Temperature Stability, Good Repeatability, Good Exchangeability, Plug and Unplug Link Together, Easy and Convenient.

**Type** : FDDI patchcord



♠ Adaptor Technical Standard

Type	Singlemode(UPC)	Singlemode(APC)	Multimode(PC)
Insertion Loss	≤0.3dB	-	≤0.3dB
Return Loss	≥50 dB (UPC)	-	≥20 dB
Operating Temperature	-40 °C ~ 80 °C		
Vibration	?≤0.1 dB change between 10Hz to 55Hz.		
Available Wavelengths	MM=850nm , SM=1550nm		

**D4 Patch**



**Use** : Applications: Fiber Optic Telecommunication System, Fiber Optic Access Network, LAN, Fiber Optic Transducer, Fiber Optic Data Transmission, CATV, Test Equipment

**Feature** : Features: Multi-polishing Ways, such as PC, UPC;

Low Insertion Loss, High Return Loss, High Temperature Stability, Good Repeatability, Good Exchangeability, Plug and Unplug Link Together, Easy and Convenient.

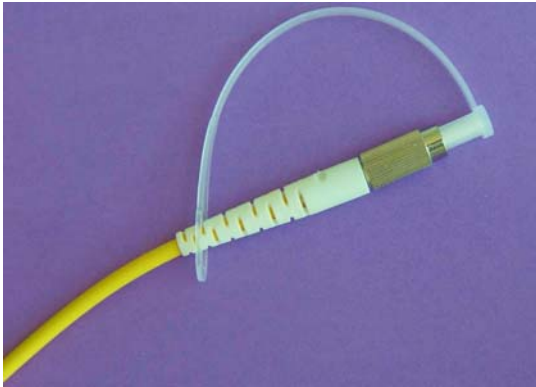
**Type** : D4 patchcord



♠ Adaptor Technical Standard

Type	Singlemode(UPC)	Singlemode(APC)	Multimode(PC)
Insertion Loss	≤0.3dB	-	≤0.3dB
Return Loss	≥50 dB (UPC)	-	≥20 dB
Operating Temperature	-40 °C ~ 80 °C		
Vibration	?≤0.1 dB change between 10Hz to 55Hz.		
Available Wavelengths	MM=850nm , SM=1550nm		

**DIN Patch**

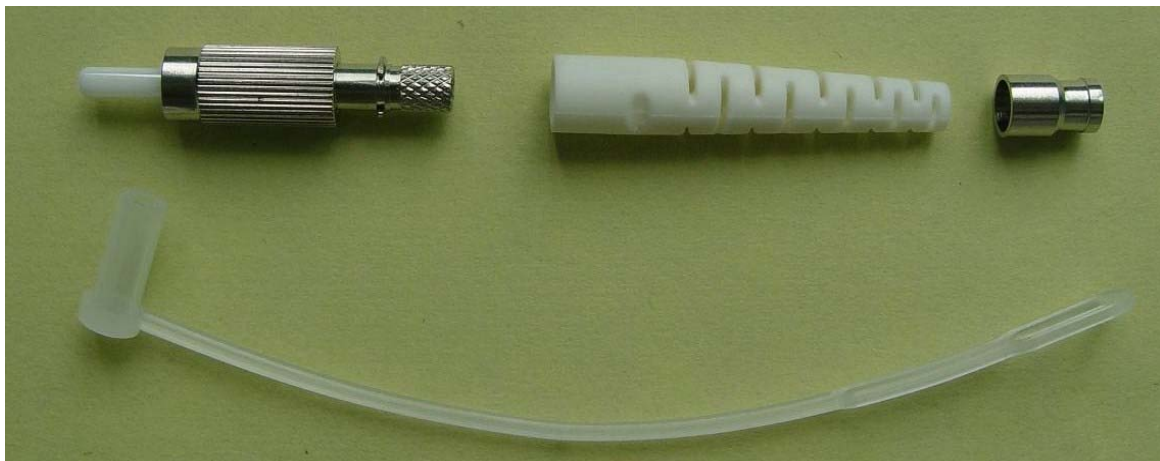


**Use** : Applications: Fiber Optic Telecommunication System, Fiber Optic Access Network, LAN, Fiber Optic Transducer, Fiber Optic Data Transmission, CATV, Test Equipment

**Feature** : Features: Multi-polishing Ways, such as PC, UPC;

Low Insertion Loss, High Return Loss, High Temperature Stability, Good Repeatability, Good Exchangeability, Plug and Unplug Link Together, Easy and Convenient.

**Type** : DIN patchcord



♠ Adaptor Technical Standard

Type	Singlemode(UPC)	Singlemode(APC)	Multimode(PC)
Insertion Loss	≤0.3dB	-	≤0.3dB
Return Loss	≥50 dB (UPC)	-	≥20 dB
Operating Temperature	-40℃ ~ 80℃		
Vibration	?≤0.1 dB change between 10Hz to 55Hz.		
Available Wavelengths	MM=850nm , SM=1550nm		