

Features

- New generation SHDSL technology, maximal transmission speed 4.6Mbps.
- One-pair wire or two-pair wire optional.
- Flexible data ports. Support dual data port in one device.
- The distance can extend to 4~5km with 0.4mm (AWG26) by the speed under 2Mbps for one-pair device and 5~6Km for two-pair device
- 10/100Base-T interface accordant with standard IEEE802.3 and 1Mbytes buffer inserted.
- MAC address list inserted and 4096 MAC address available.
- E1 interface accordant with standards as ITU-TG.703、G.823 and G.742.
- Easy to install and operate. Working preferences by DIP switch and software control.
- Using 16TC-PAM Code to reduce ISI and to improve the transmission performance.
- AC110~240V or DC48V power supply optional.
- DSL speed is modifiable

Line interface

- Rate : 192Kbps~ 4640Kbps.
- Impedance : 135Ω
- Code : 16TC—PAM

E1 interface

- Speed : Framed/Unframed
- Code : HDB3
- Impedance : Unbalance 75Ω、Balance 120Ω
- Standard : ITU-TG.703、G.704、G.823 and G.742

Ethernet Ports

- Rate : 10/100Mbps
- Standard : IEEE802.3、IEEE802.11
- Frame Buffer : 1MBytes
- Capacity of MAC address : 4096

V.35 interface

- Rate : nx64kbps
- Rate set: DIP switch
- Flow control: User define
- Interface: DB25F

2 Wire: 4km , 4 Wire :6 km

G.SHDSL MODEM

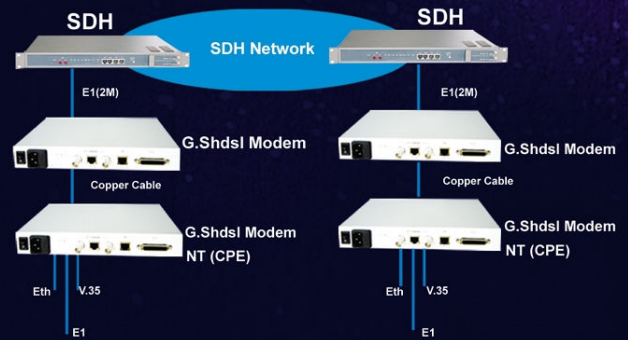
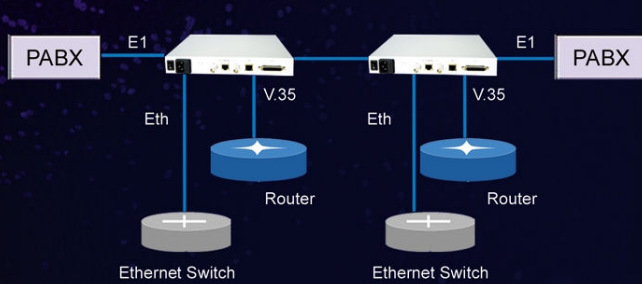
E1 Ethernet V.35 Ports

E1/Ethernet/V.35 Optional, single or dual pairs optional



Features

- Compliant to ITU-T G.991.2, TCPAM-16 code
- Single and Dual pair operation for long reach
- Support Self-testing and Loop-back testing
- E1, V.35 or Ethernet datas Share the bandwidth of DSL line
- Interoperability with most common DSLAMs
- Support CLI management and SNMP-based software

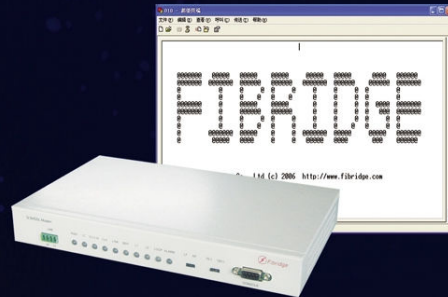


Powerful Ethernet G.SHDSL MODEM

ATM-based Ethernet CPE, PPPoE/PPPoA protocols

Features

- Compliant to ITU-T G.991.2 (G.shdsl and G.shdsl bis), TCPAM-16 code
- Single and Dual pair operation for long reach
- Up to 5.69 Mbps in single pair line and 11.38Mbps when dual pair
- Speed auto-sensing
- Support ATM ALL5, up to 8 PVCs
- Support PPPoE, PPPoA
- Support DHCP Server/Client, RIP, NAT
- Easy management via SNMP/Telnet/CLI
- Easy Software upgrade with TFTP protocol



BEIJING FIBRIDGE CO., LTD.

Add: A402, Power Creative Building, No.1, Shangdi East Rd, Haidian District, Beijing, 100085, PR CHINA
Tel: (8610)58858988 Fax: (8610)58858520 Http://www.fibrIDGE.com



www.fibrIDGE-tr.com

Perpa Ticaret Merkezi, A Blok No.516
Okmeydanı/İSTANBUL
Tel : 0212 320 4030

Address : Perpa Ticaret Merkezi, A Blok No.516 Şişli/İstanbul | Tel : +90 212 3204030 | Fax : +90212 3200255 | e-mail : info@telkolink.com

www.telkolink.com

© 2009 telcolink Inc. All rights reserved. Information in this document is subject to change without notice. All company names, logos, and product designs that are trademarks or registered trademarks are the property of their respective owners. 617-000175 Rev. C

Quality Link Connections

