



GTJA208-9

Dome Fiber Optical Splice Closure

Product Description

The GTJA208-9 Closure allows two cables in and three cables out (with three stand-alone Cable Entry Ports and one oval cable entry port). It accommodates the splicing and branching of the cables which is used in aerial-hanger, wall-mounting or direct buried. applications The Closure is re entrable and is made from high-quality PC. The closure and the foundation plate are sealed with Silicon Gum Material which fixes tightly with a hoop. The entry ports are sealed with heat-shrinkable tubing . The Closure can be opened and used again.

Application: Aerial-hanger, pole, Wall-mounting, Direct Buried

Specification

Item	GTJA208-9
Dimension (mm)	Φ100×340
Weight (Kg)	1.5
Cable Diameter (mm)	Φ7-Φ18
Cables Entry & Exit	2 & 3
Max Capacity of Cores Per Splice Tray	12 (Single)
Max Capacity of Splice Trays/ Closure	2
Max Capacity of Core	24 (Single)
Sealing Structure of Cable Entry Port	Heat-shrinkable Sealing Structure
Sealing Structure	Silicon Gum Material

Accessories

Icon	Details	Icon	Details
	<p>Name: Splice Protective Tube</p> <p>Type: FPS-01</p> <p>Qty: According to the fiber cores</p>		<p>Name: Hanging Hook</p> <p>Type: Aerial-hanging or Wall-mounting</p> <p>Qty: 1 Set</p>
	<p>Name: Cables Ties</p> <p>Type: 3×100(mm)</p> <p>Qty: 4×Splice Tray</p>		<p>Name: Heat-shrinkable Tube</p> <p>Type: Φ50×150(mm)</p> <p>Qty: 1 PCS</p>
	<p>Name: Heat-shrinkable Tube</p> <p>Type: Φ28×150(mm)</p> <p>Qty: 3 PCS</p>		<p>Name: Branch Block</p> <p>Type:</p> <p>Qty: 1 PCS</p>
	<p>Name: Marking Note</p> <p>Type: Non-dry Glue</p> <p>Qty: 4×Fiber Core</p>		

Address : Perpa Ticaret Merkezi, A Blok No.516 Şişli/İstanbul | Tel : +90 212 3204030 | Fax : +90212 3200255 | e-mail : info@telkolink.com

www.telkolink.com

© 2009 telcolink Inc. All rights reserved. Information in this document is subject to change without notice. All company names, logos, and product designs that are trademarks or registered trademarks are the property of their respective owners. 617-000175 Rev. C



Tools Required

Icon	Details	Icon	Details
	Name: Blast Burner or Welding Gun Type: Qty: 1 PCS		Name: Saw Type: Qty: 1 PCS
	Name: Pliers Type: Qty: 1 PCS		Name: phillips Screwdriver Type: Qty: 1 PCS
	Name: Scrubber Type: Clean Qty: 1 PCS		Name: flat Screwdriver Type: Qty: 1 PCS

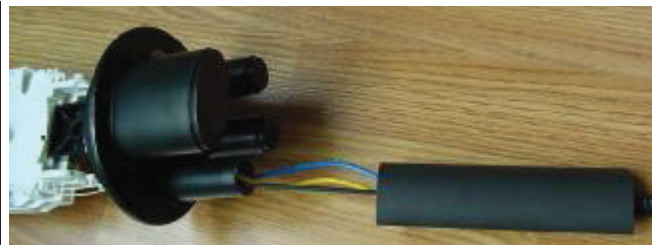
Installation Steps



(0) Check product, accessories and tools



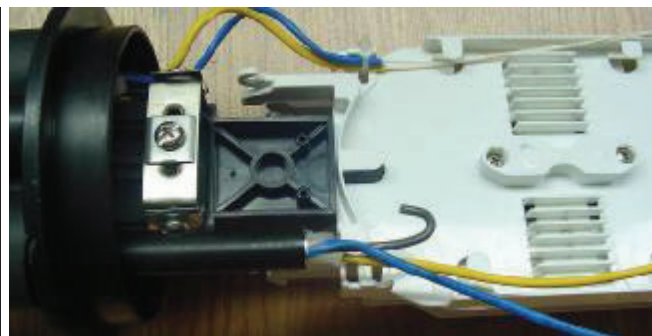
(1) Saw the entry ports as need.



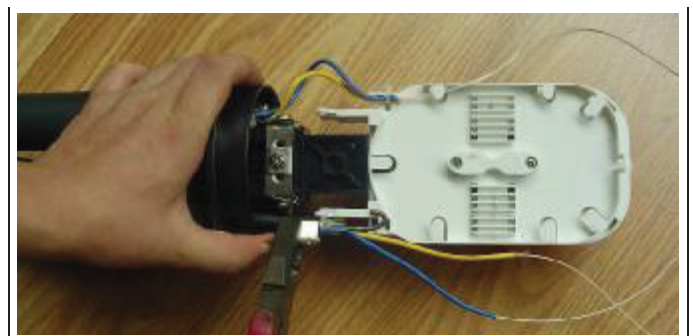
(2) open the cable as required and slide on heat-shrinkable tube.



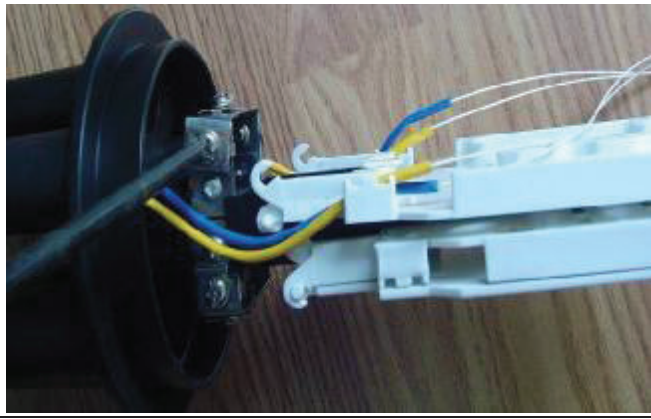
(3) push the cable onto the bracket through the entry ports.



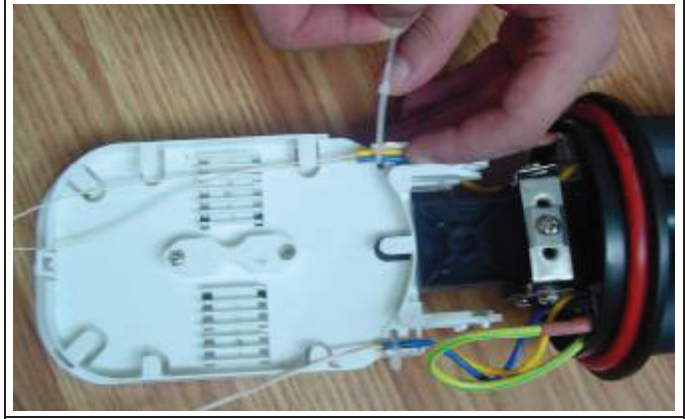
(4) Bend the strengthen wire with side nipper to fix it



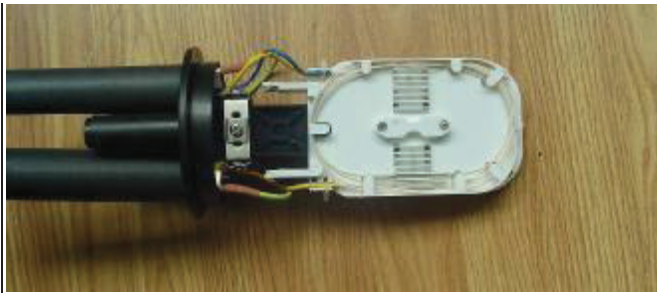
5) crimp on the earthing wire



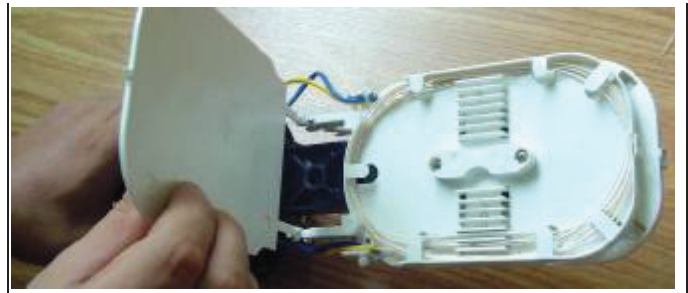
(6) Fasten the strength wire /member of the cable by using cross-shaped screwdriver.



(7) Fix the fibers at the entry part of the splice tray with cables ties.



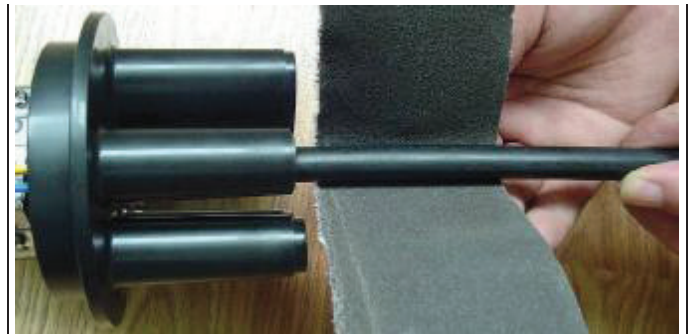
(8)Put the optic fiber in the splice tray after splicing



(9) Put the cover of the splice tray on.



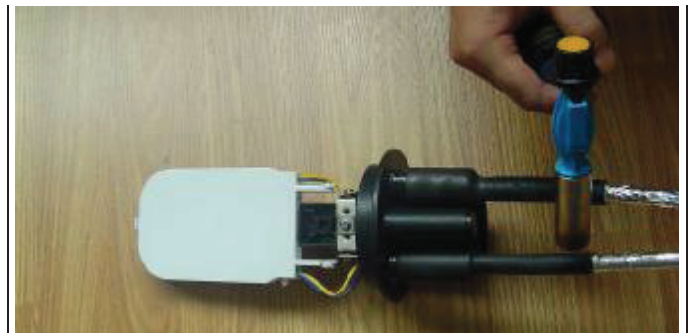
(10)Sealing of cable and base: clean the entry ports and cable for 10cm with alcohol



(11) Sand the cable and entry ports that need to heat-shrink with abrasive Wipe the dust that is left after sanding away.



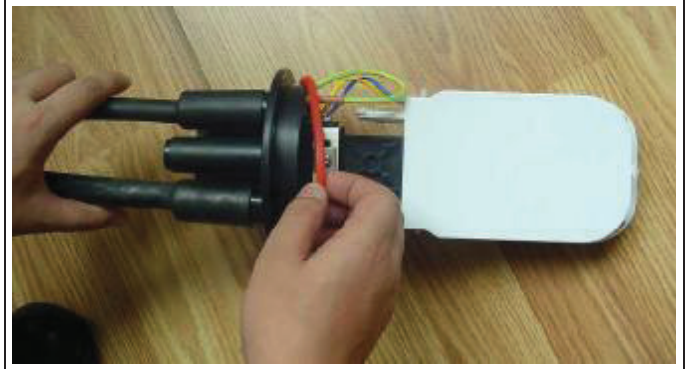
(12) wrap and even the heat-shrink part with aluminum paper to avoid overheating caused by high temperature burner.



(13) Put the heat-shrinkable tube on the entry ports, , shrink with burner and stop heating after it is tight Let it cool naturally.



(14) Use a branch fork: when heating the oval entry port, fork the heat-shrinkable tube to separate the two cables and heat-shrink it --follow the steps above.



(15) Sealing: use clean cloth to clean the base, then, fit the silicone rubber ring in place



(16) Put the body on the base.



(17) Put on the clamp, and tighten



(18) When complete, fix the hanging hook as shown and, fix another steel belt on the aerial-hanging pillar./pole