

Gigabit Ethernet Fiber Optik Çevirici

Netlink Gigabit Serisi 1G ethernet / fiber media converter cihazları etherneti fibere çevirir.

- Fiber optik kablo üzerinden LAN to LAN Network Bağlantısı
- F/O Kablo üzerinden ethernet mesafe uzatma (ethernet extender)
- SDH , Switch gibi haberleşme ve telekomünikasyon cihazları arasında optik / bakır ethernet protokol çevirici. Elektriksel / optik dönüşümünü gerçekleştirir.



NetLINK Series Gigabit Fiber Converter can convert Optical-Electric Ethernet signals between 10/100/1000M UTP interface (TX) and 1000M optical fiber interface (FX). The traditional 10/100/1000M gigabit Ethernet can be extended to the distance of 100km through optical fiber link. The performance and quality of the products are excellent because of adopting latest Gigabyte IC from USA and Taiwan. 6 Group LED indicated lights could fully monitor the working conditions of converters. It is easy for users to observe and diagnose the failure of converters.

Main features

1. Auto negotiation function allows UTP ports to auto select 10/100/1000M and Full Duplex or Half Duplex.
2. UTP port supports MDI / MDI-X auto crossover.
3. Supporting the max 1536 byte Ethernet packet.
4. Supporting flow control.
5. Adopting internal power supply.

Technical Specifications

* Operating standards: IEEE802. 3z/AB 1000Base-T, 1000Base-SX/LX

* MAC address table: 4K

* Data Buffer: 256K

* Connector: UTP: RJ-45, 10/100/1000Mbps, Fiber: SC, 1000Mbps

* Cable

UTP: Cat 5e or Cat 6 (the max distance up to 100m)

Fiber (multimode): 50/125, 62.5/125 紵 (the max distance up to 550/224m)

Fiber (singlemode): 8.3/125, 8.7/125, 9/125 紵 (the max distance up to 100km)

* Flow control

Full Duplex: IEEE802.3x flow control

Half Duplex: Back pressure flow control

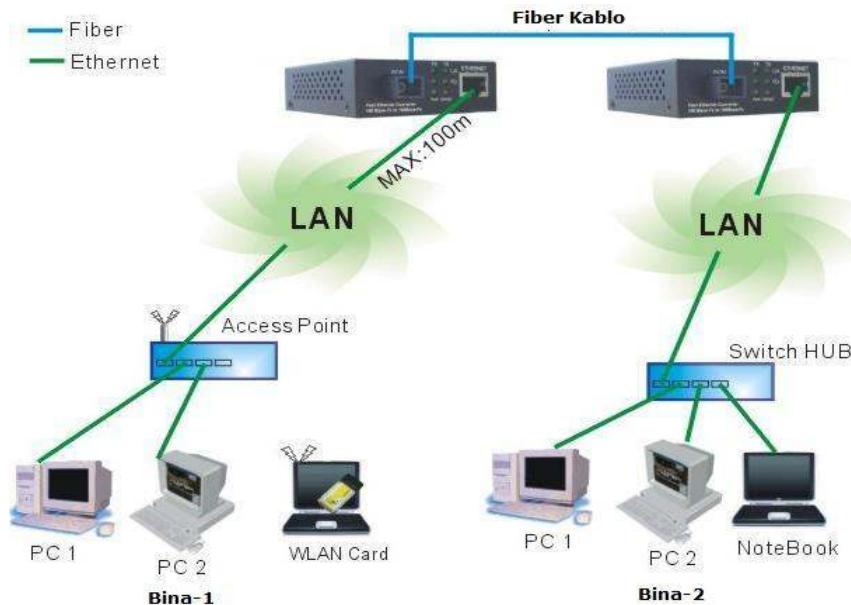
* Power: A. C. 220V (170-250V), 50Hz; D. C. 5V, 1A

* Ambient temperature: 0 ~ +50degree

* Storage temperature: -20 ~ +70degree

* Humidity: 5% ~ 90%

Uygulama Örneği



Sipariş Numaraları P/N

Type	Mode	Con.	Wavelength	TX power	Sensitivity	Max. Dist	Link Budget
HTB-GM03	Multimode	SC	850nm	-10~-3dBm	-18dBm	224/550m	8dBm
HTB-GS03-10	Singlemode	SC	1310nm	-12~5dBm	-20dBm	10km	8dBm
HTB-GS03-20	Singlemode	SC	1310nm	-5~0dBm	-22dBm	20km	13dBm
HTB-GS03-30	Singlemode	SC	1310nm	-4~0dBm	-24dBm	30km	20dBm
HTB-GS03-40	Singlemode	SC	1550nm	-8~0dBm	-24dBm	40km	16dBm
HTB-GS03-50	Singlemode	SC	1550nm	-6~0dBm	-26dBm	50km	20dBm
HTB-GS03-70	Singlemode	SC	1550nm	-3~3dBm	-28dBm	70km	25dBm

- 10/100M fast ethernet fiber media converterlerimiz için web sayfamızı ziyaret edin

Address : Perpa Ticaret Merkezi, A Blok No.516 Şişli/İstanbul | Tel : +90 212 3204030 | Fax : +90212 3200255 | e-mail : info@telkolink.com

www.telkolink.com

© 2009 telkolink Inc. All rights reserved. Information in this document is subject to change without notice. All company names, logos, and product designs that are trademarks or registered trademarks are the property of their respective owners. 617-000175 Rev. C

Haberleşme sistemlerinde **yüksek performansı** yakalayın

